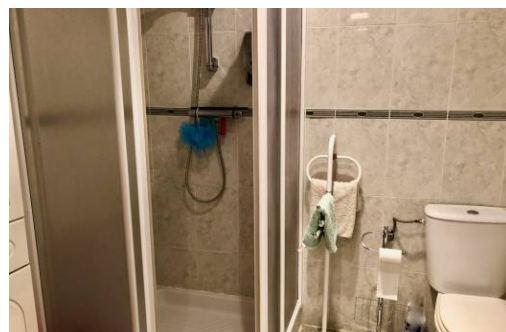
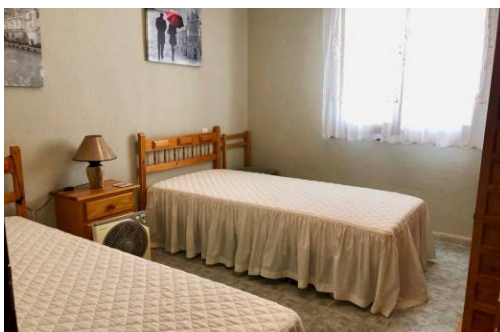


Ref.

**Consult**



IN PROCESS



■ Energy Rating: In process

## Features

- American Kitchen
- Close to Golf
- Close to Shops
- Fitted Wardrobes
- Garden View
- Private Terrace
- Street Parking
- Walk To Amenities
- Ceiling Fans
- Close to Schools
- Condition - Excellent
- Fully Fitted Kitchen
- Glazed Terrace
- South Facing
- Utility Room